

 *biolatrix*

CATALOGUE 2014

MONOREAGENT

CATALOGUE 2014

MONOREAGENT

PRODUCT PACKAGING LIST	PAG. 3
ANTISTREPTOLYSIN O	PAG. 4
C REACTIVE PROTEIN	PAG. 6
CARDIAC MARKER C REACTIVE PROTEIN	PAG. 8
RHEUMATOID FACTOR	PAG. 10
FERRITIN	PAG. 12
LIPOPROTEIN (A)	PAG. 14
β_2 -MICROGLOBULIN	PAG. 16
MICROALBUMIN	PAG. 18

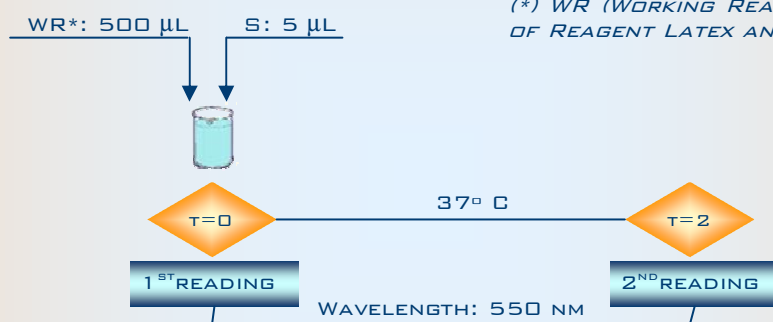
REF.	PRODUCT	PACKAGING
		MONOREAGENT
B-9450M	ANTISTREPTOLYSIN O (ASO) BUFFER	9 L
L-9550M	ANTISTREPTOLYSIN O (ASO) LATEX	1 L
S-9350T2	ANTISTREPTOLYSIN O (ASO) CALIBRATOR	100 ML
C-9350TL	ANTISTREPTOLYSIN O (ASO) CONTROL	100 ML
B-9410M	C REACTIVE PROTEIN (CRP) BUFFER	9 L
L-9510M	C REACTIVE PROTEIN (CRP) LATEX	1 L
S-9310T3	C REACTIVE PROTEIN (CRP) CALIBRATOR	100 ML
C-9310TL	C REACTIVE PROTEIN (CRP) CONTROL	100 ML
B-9410MCM	CRP CARDIAC MARKER (CRPCM) BUFFER	9 L
L-9510MCM	CRP CARDIAC MARKER (CRPCM) LATEX	1 L
C-9310T4CM	CRP CARDIAC MARKER (CRPCM) CALIBRATOR	100 ML
C-9310TCM	CRP CARDIAC MARKER (CRPCM) CONTROL	100 ML
B-9440M	RHEUMATOID FACTOR (RF) BUFFER	9 L
L-9540M	RHEUMATOID FACTOR (RF) LATEX	1 L
S-9340T3	RHEUMATOID FACTOR (RF) CALIBRATOR	100 ML
C-9340TL	RHEUMATOID FACTOR (RF) CONTROL LOW	100 ML
B-9460M	FERRITIN BUFFER	2,5 L
L-9560M	FERRITIN LATEX	1 L
S-9360T5	FERRITIN CALIBRATOR	100 ML
C-9360TL	FERRITIN CONTROL LOW	100 ML
B-9420M	LIPOPROTEIN (A) [LP(A)] BUFFER	7 L
L-9520M	LIPOPROTEIN (A) [LP(A)] LATEX	1 L
S-9320T2	LIPOPROTEIN (A) [LP(A)] CALIBRATOR	LYOPH. 1 ML
C-9320T	LIPOPROTEIN (A) [LP(A)] CONTROL	LYOPH. 1 ML
B-9430M	β_2 -MICROGLOBULIN (β_2-M) BUFFER	5 L
L-9530M	β_2 -MICROGLOBULIN (β_2-M) LATEX	1 L
S-9330T5	β_2 -MICROGLOBULIN (β_2-M) CALIBRATOR	100 ML
C-9330TL	β_2 -MICROGLOBULIN (β_2-M) CONTROL LOW	100 ML
B-9470M	MICROALBUMIN (MAU) BUFFER	9 L
L-9570M	MICROALBUMIN (MAU) LATEX	1 L
S-9370T4	MICROALBUMIN (MAU) CALIBRATOR	100 ML
C-9370TL	MICROALBUMIN (MAU) CONTROL LOW	100 ML

biolatrix MONOREAGENT ANTISTREPTOLYSIN O

MAIN FEATURES

- LATEX ENHANCED IMMUNOTURBIDIMETRIC MONOREAGENT METHOD
- EASY TO PROGRAM ON ANY TYPE OF AUTOMATED ANALYZERS
- GOOD CORRELATION WITH A NEPHELOMETRIC COMMERCIAL PROCEDURE
- RANGE OF ANALYSIS0.0 – 900 IU/ML LINEAR UP TO 400 IU/ML
- GOOD PRECISION.....INTRA-ASSAY: CVs < 3.1 %
.....INTER-ASSAY: CVs < 4.4 %
- LIQUID REAGENTS.....READY TO USE
- SELF-LIFE.....2 YEARS
- PROZONE> 1500 IU/ML
- LDD< 15 IU/ML

GENERAL APPLICATION



(*) WR (WORKING REAGENT) IS PREPARED MIXING ONE PART OF REAGENT LATEX AND NINE PARTS OF REAGENT BUFFER

PRECISION

	1	2	3
CONCENTRATION IU/ML	100	200	430
GV %	2.9	3.1	2.9

INTRA-ASSAY PRECISION (N=10)

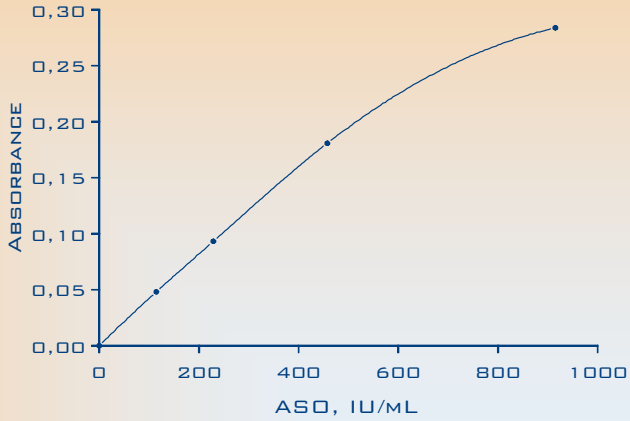
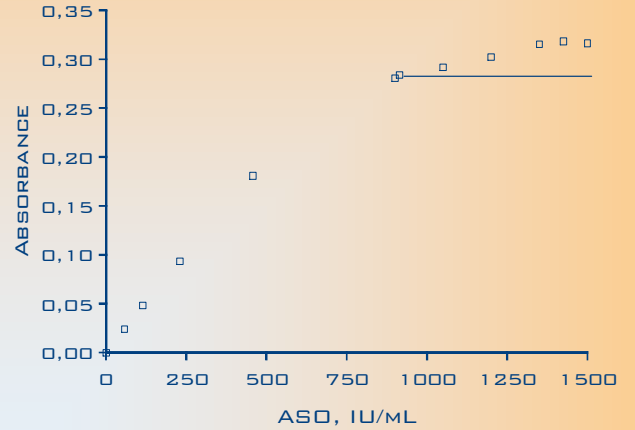
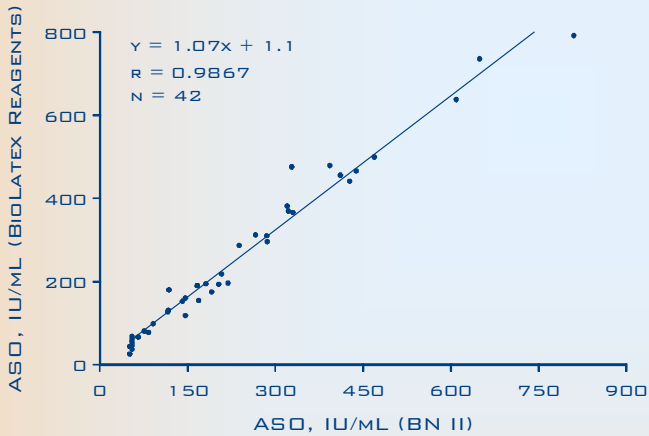
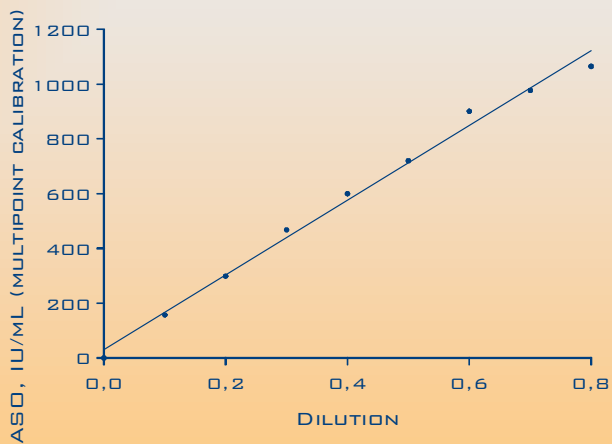
	1	2	3
CONCENTRATION IU/ML	100	200	430
CV %	2.9	3.6	4.4

INTER-ASSAY PRECISION (N=10)

SENSITIVITY*

SENSITIVITY	
N	20
LDD IU/ML	< 15

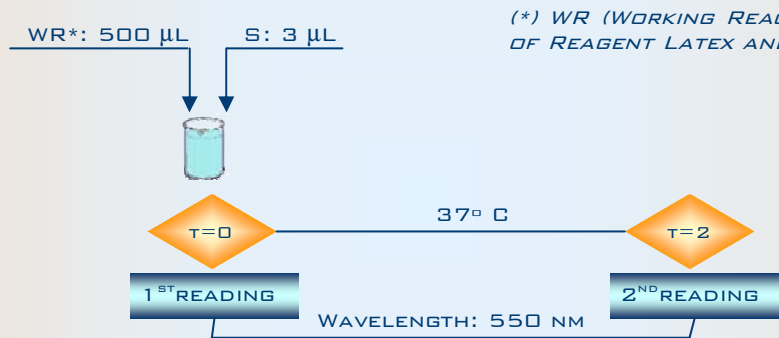
(*) LEAST DETECTABLE DOSE (SENSITIVITY) DETERMINED AS THE ANTISTREPTOLYSIN O NEEDED FOR A THREE DEVIATION RESPONSE OVER THE 0.0 MG/L STANDARD ONE

CALIBRATION CURVE

PROZONE

METHOD COMPARISON

LINEARITY


MAIN FEATURES

- LATEX ENHANCED IMMUNOTURBIDIMETRIC MONOREAGENT METHOD
- EASY TO PROGRAM ON ANY TYPE OF AUTOMATED ANALYZERS
- GOOD CORRELATION WITH A NEPHELOMETRIC COMMERCIAL PROCEDURE
- RANGE OF ANALYSIS0.0 – 90 MG/L LINEAR UP TO 90 MG/L
- GOOD PRECISION.....INTRA-ASSAY: CVs < 4.2 %
.....INTER-ASSAY: CVs < 4.6 %
- LIQUID REAGENTS.....READY TO USE
- SELF-LIFE.....2 YEARS
- PROZONE> 430 MG/L
- LDD< 2.0 MG/L

GENERAL APPLICATION



(* WR (WORKING REAGENT) IS PREPARED MIXING ONE PART OF REAGENT LATEX AND NINE PARTS OF REAGENT BUFFER

PRECISION

	1	2	3
CONCENTRATION MG/L	8.0	18	33
CV %	2.8	3.2	4.2

INTRA-ASSAY PRECISION (N=10)

	1	2	3
CONCENTRATION MG/L	8.0	18	33
CV %	3.9	4.1	4.6

INTER-ASSAY PRECISION (N=10)

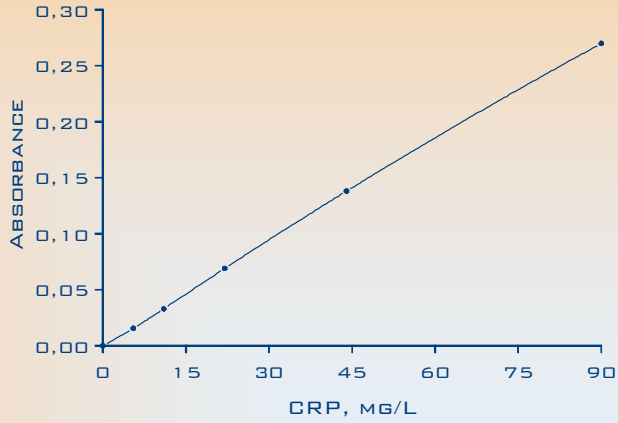
SENSITIVITY*

SENSITIVITY	
N	20
LDD MG/L	< 2.0

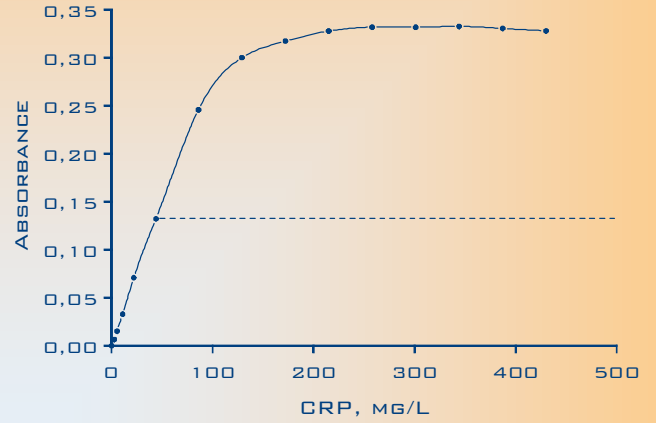
(* LEAST DETECTABLE DOSE (SENSITIVITY) DETERMINED AS THE C REACTIVE PROTEIN CONCENTRATION NEEDED FOR A THREE DEVIATION RESPONSE OVER THE 0.0 MG/L STANDARD ONE



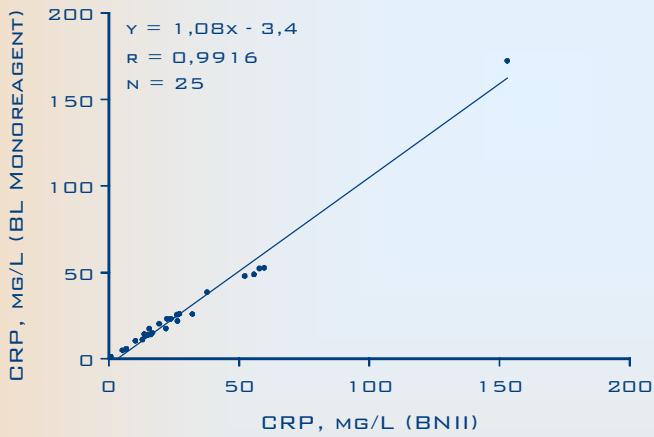
CALIBRATION CURVE



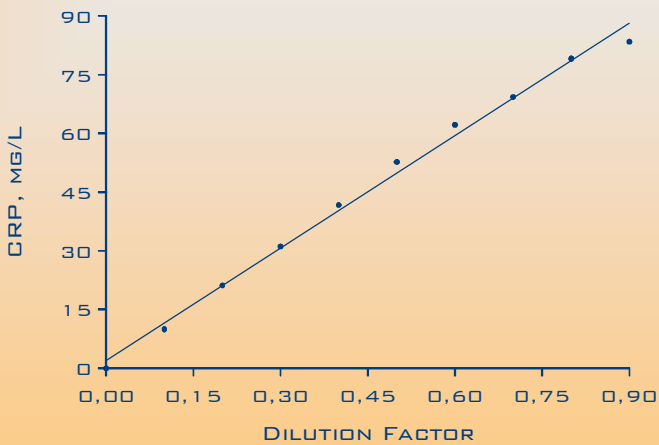
PROZONE



METHOD COMPARISON



LINEARITY



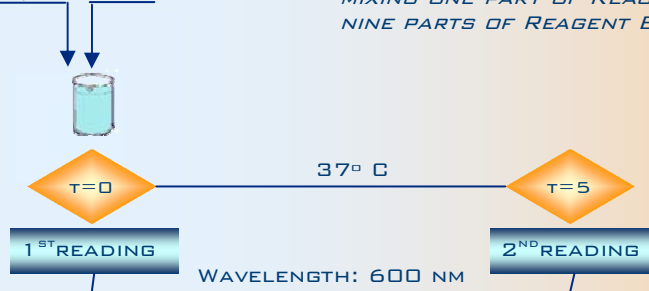
biolatrix CARDIAC MARKER MONOREAGENT C REACTIVE PROTEIN

MAIN FEATURES

- LATEX ENHANCED TURBIDIMETRIC METHOD
- EASY TO USE ON A CONVENTIONAL SPECTROPHOTOMETER
- GOOD CORRELATION WITH A COMMERCIAL PROCEDURE
- RANGE OF ANALYSIS0.0 – 12.5 MG/L LINEAR UP TO 6.5 MG/L
- GOOD PRECISION.....INTRA-ASSAY: CVs < 2.4 %
.....INTER-ASSAY: CVs < 2.5 %
- LIQUID REAGENTS.....READY TO USE
- SELF-LIFE.....2 YEARS
- PROZONE> 45 MG/L
- LDD< 0.05 MG/L

GENERAL APPLICATION

WR*: 500 µL S: 8 µL



PRECISION

	1	2	3
CONCENTRATION MG/L	0.75	1.5	3.0
CV %	2.3	2.4	1.6

INTRA-ASSAY PRECISION (N=10)

	1	2	3
CONCENTRATION MG/L	0.75	1.5	3.0
CV %	2.5	2.0	1.6

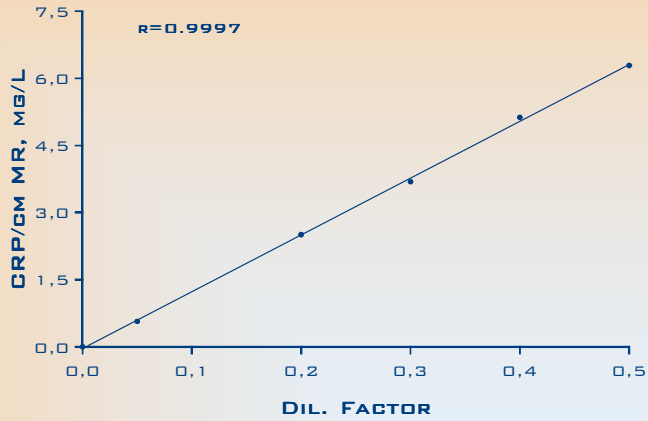
INTER-ASSAY PRECISION (N=10)

SENSITIVITY*

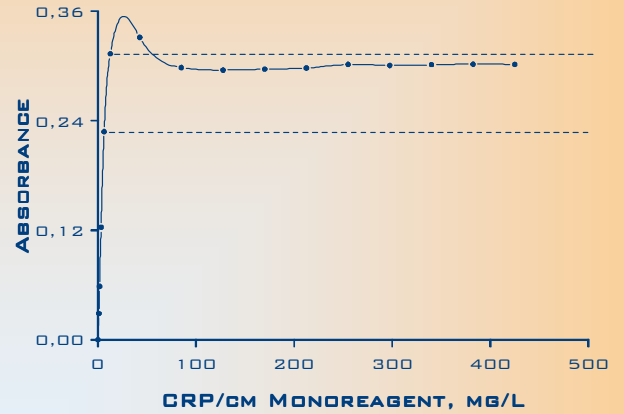
SENSITIVITY	
N	20
LDD MG/L	<0.05

(*) LEAST DETECTABLE DOSE (SENSITIVITY) DETERMINED AS THE C REACTIVE PROTEIN CONCENTRATION NEEDED FOR A THREE DEVIATION RESPONSE OVER THE 0.0 MG/L STANDARD ONE

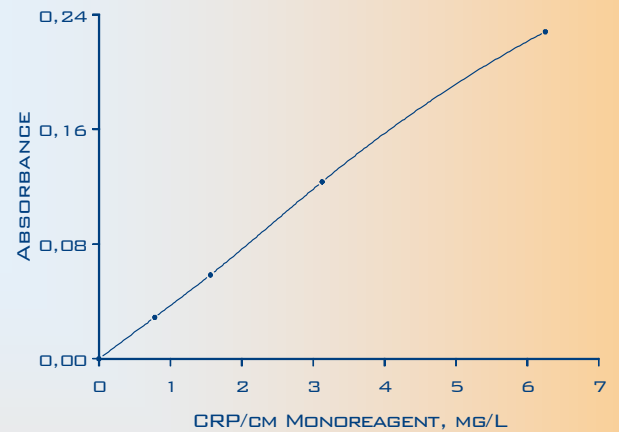
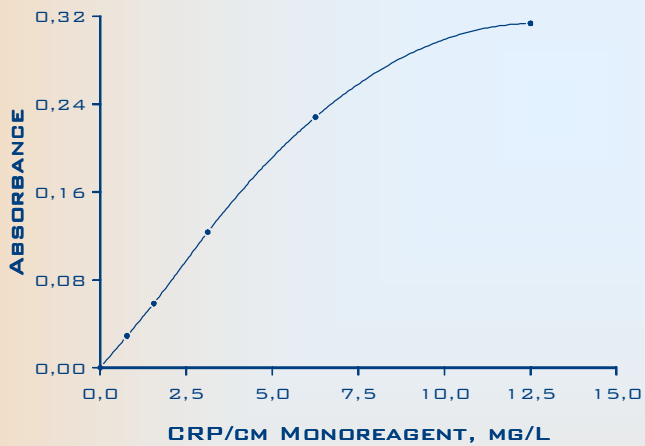
LINEARITY



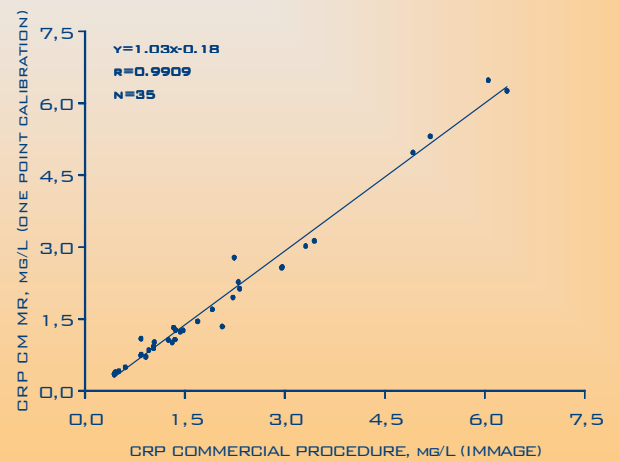
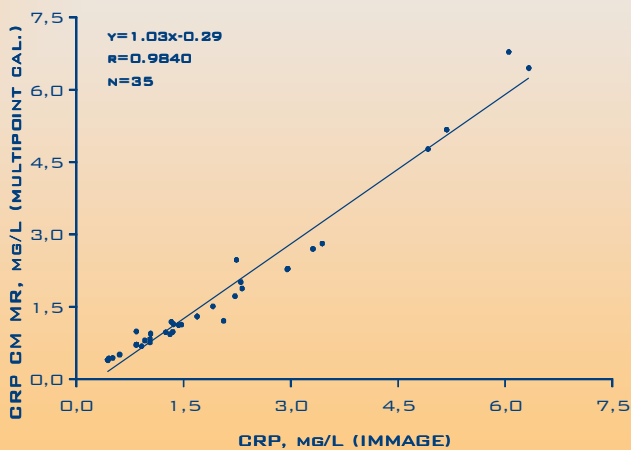
PROZONE



CALIBRATION CURVE



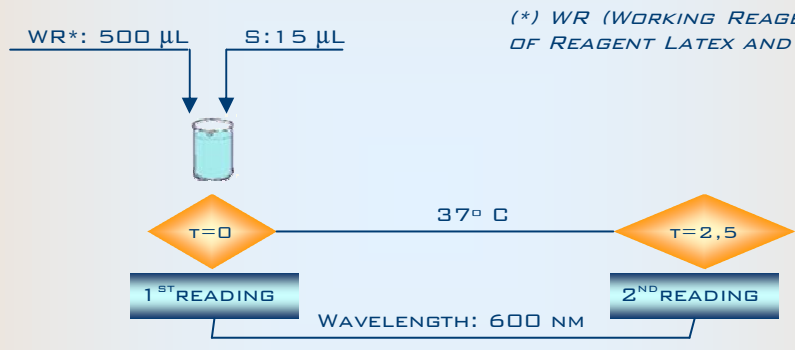
METHOD COMPARISON



MAIN FEATURES

- LATEX ENHANCED IMMUNOTURBIDIMETRIC MONOREAGENT METHOD
- EASY TO PROGRAM ON ANY TYPE OF AUTOMATED ANALYZERS
- GOOD CORRELATION WITH A NEPHELOMETRIC COMMERCIAL PROCEDURE
- RANGE OF ANALYSIS0.0 – 200 IU/ML APPROX. LINEAR UP TO 80 IU/ML
- GOOD PRECISION.....INTRA-ASSAY: CVs < 4.7 %
.....INTER-ASSAY: CVs < 3.8 %
- LIQUID REAGENTS.....READY TO USE
- SELF-LIFE.....2 YEARS
- PROZONE> 1500 IU/ML
- LDD< 10 IU/ML

GENERAL APPLICATION



(* WR (WORKING REAGENT) IS PREPARED MIXING ONE PART OF REAGENT LATEX AND NINE PARTS OF REAGENT BUFFER

PRECISION

	1	2	3
CONCENTRATION IU/ML	17	70	120
GV %	4.7	2.6	2.1

INTRA-ASSAY PRECISION (N=10)

	1	2	3
CONCENTRATION IU/ML	17	70	120
CV %	2.5	3.8	2.3

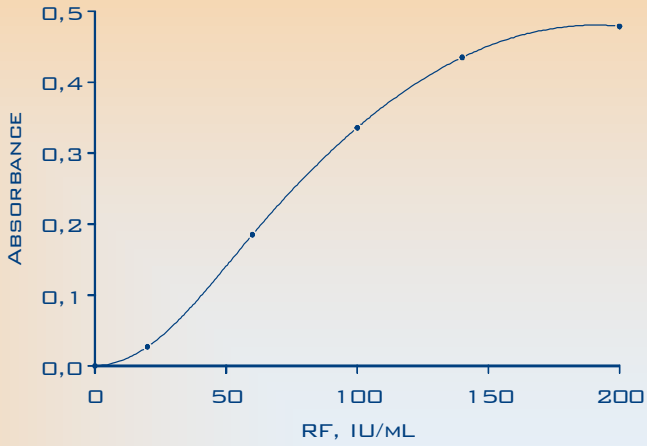
INTER-ASSAY PRECISION (N=10)

SENSITIVITY*

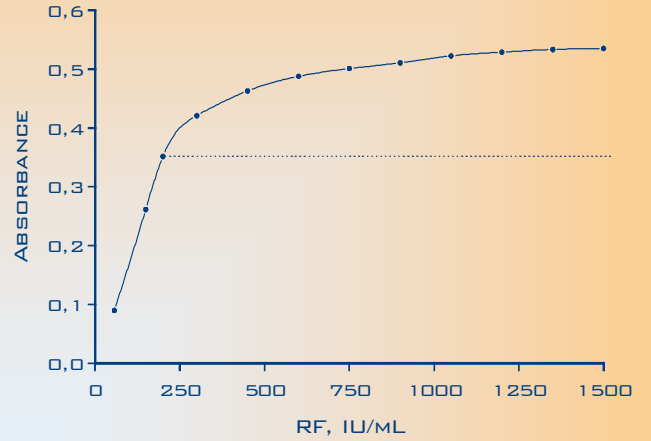
SENSITIVITY	
N	20
LDD IU/ML	<10

(* LEAST DETECTABLE DOSE (SENSITIVITY) DETERMINED AS THE RHEUMATOID FACTOR CONCENTRATION NEEDED FOR A THREE DEVIATION RESPONSE OVER THE 0.0 MG/L STANDARD ONE

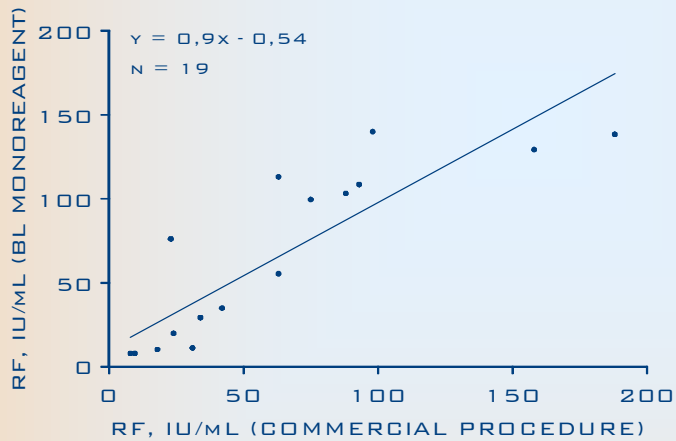
CALIBRATION CURVE



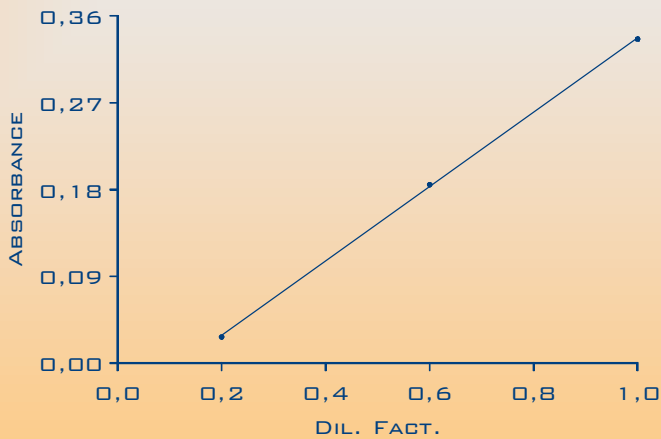
PROZONE



METHOD COMPARISON



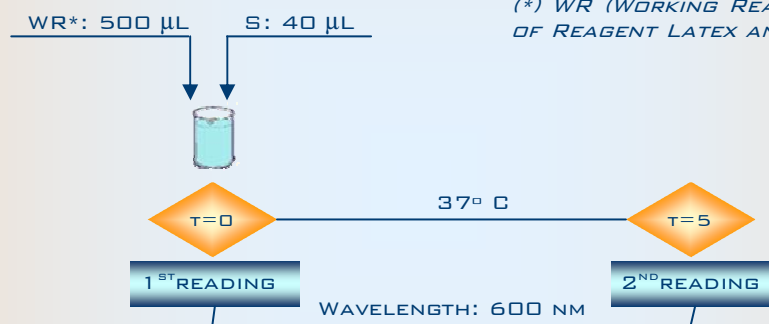
LINEARITY



MAIN FEATURES

- LATEX ENHANCED IMMUNOTURBIDIMETRIC MONOREAGENT METHOD
- EASY TO PROGRAM ON ANY TYPE OF AUTOMATED ANALYZERS
- GOOD CORRELATION WITH A NEPHELOMETRIC COMMERCIAL PROCEDURE
- RANGE OF ANALYSIS0.0 – 500 NG/ML LINEAR UP TO 300 NG/ML
- GOOD PRECISION.....INTRA-ASSAY: CVs < 3.4 %
.....INTER-ASSAY: CVs < 3.9 %
- LIQUID REAGENTS.....READY TO USE
- SELF-LIFE.....18 MONTHS
- PROZONE> 7000 NG/ML
- LDD< 5.0 NG/ML

GENERAL APPLICATION



(* WR (WORKING REAGENT) IS PREPARED MIXING ONE PART OF REAGENT LATEX AND 2.5 PARTS OF REAGENT BUFFER

PRECISION

	1	2	3
CONCENTRATION NG/ML	37	170	270
CV %	3.4	1.4	1.0

INTRA-ASSAY PRECISION (N=10)

	1	2	3
CONCENTRATION NG/ML	37	170	270
CV %	3.9	1.7	1.3

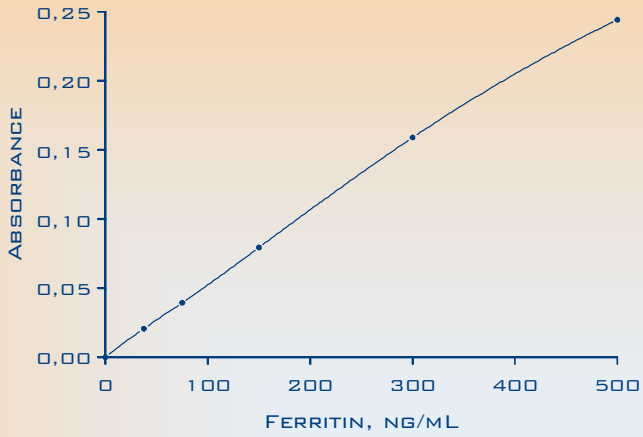
INTER-ASSAY PRECISION (N=10)

SENSITIVITY*

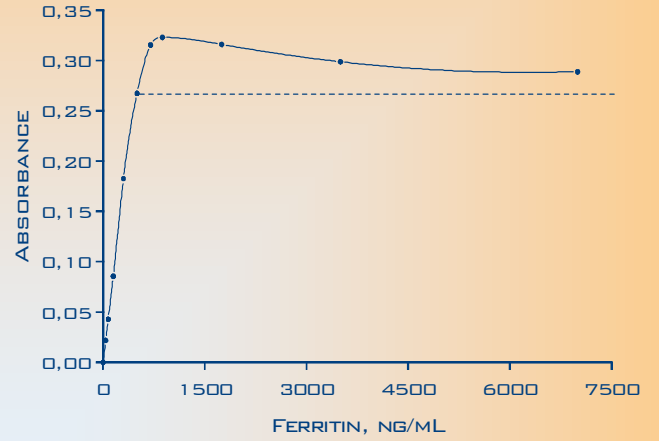
SENSITIVITY	
N	20
LDD NG/ML	<5.0

(* LEAST DETECTABLE DOSE (SENSITIVITY) DETERMINED AS THE FERRITIN CONCENTRATION NEEDED FOR A THREE DEVIATION RESPONSE OVER THE 0.0 NG/ML STANDARD ONE

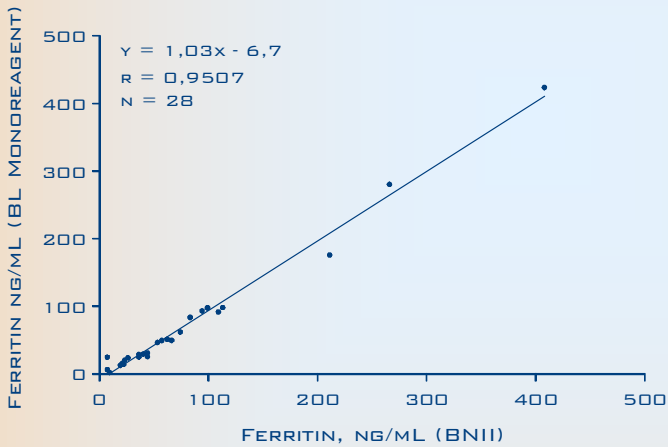
CALIBRATION CURVE



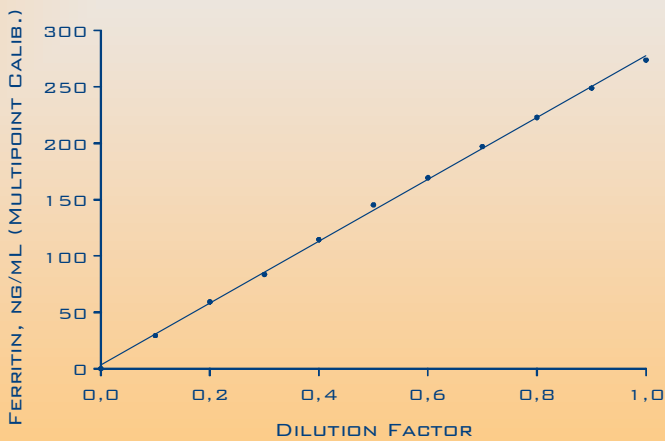
PROZONE



METHOD COMPARISON



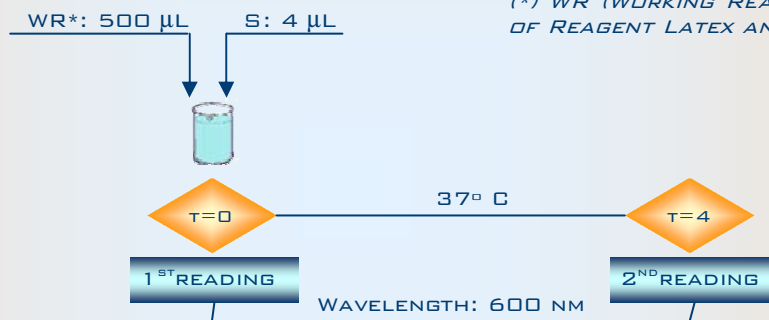
LINEARITY



MAIN FEATURES

- LATEX ENHANCED IMMUNOTURBIDIMETRIC MONOREAGENT METHOD
- EASY TO PROGRAM ON ANY TYPE OF AUTOMATED ANALYZERS
- GOOD CORRELATION WITH A COMMERCIAL PROCEDURE
- RANGE OF ANALYSIS0.0 – 900 MG/L LINEAR UP TO 400 MG/L
- GOOD PRECISION.....INTRA-ASSAY: CVs < 4.4 %
.....INTER-ASSAY: CVs < 4.8 %
- LIQUID REAGENTS.....READY TO USE
- SELF-LIFE.....2 YEARS
- PROZONE> 2200 MG/L
- LDD< 15 MG/L

GENERAL APPLICATION



(*) WR (WORKING REAGENT) IS PREPARED MIXING ONE PART OF REAGENT LATEX AND SEVEN PARTS OF REAGENT BUFFER

PRECISION

	1	2	3
CONCENTRATION MG/L	90	170	325
CV %	1.7	2.0	4.4

INTRA-ASSAY PRECISION (N=10)

	1	2	3
CONCENTRATION MG/L	90	170	325
CV %	3.3	1.7	4.8

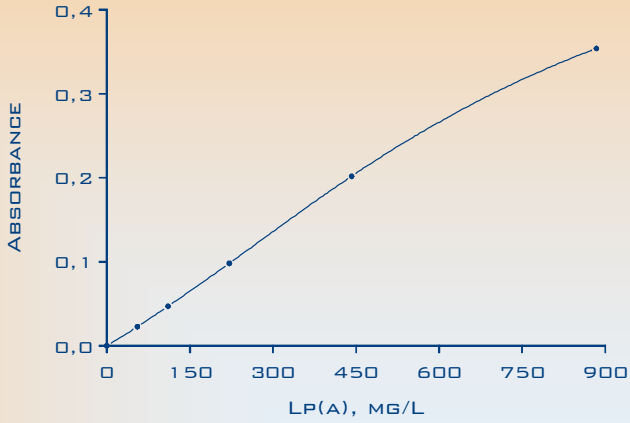
INTER-ASSAY PRECISION (N=10)

SENSITIVITY*

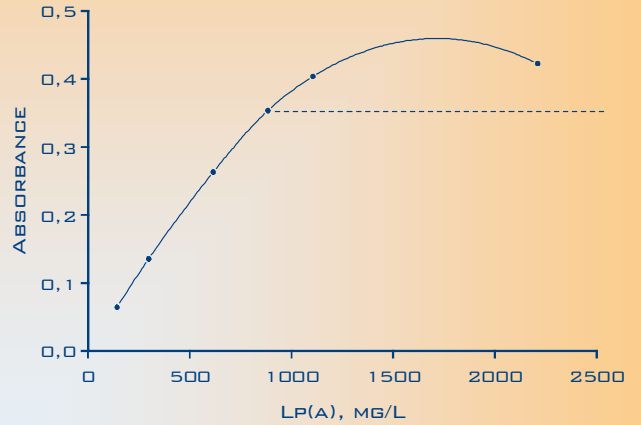
SENSITIVITY	
N	20
LDD MG/L	< 15

(*) LEAST DETECTABLE DOSE (SENSITIVITY) DETERMINED AS THE LIPOPROTEIN (A) CONCENTRATION NEEDED FOR A THREE DEVIATION RESPONSE OVER THE 0.0 MG/L STANDARD ONE

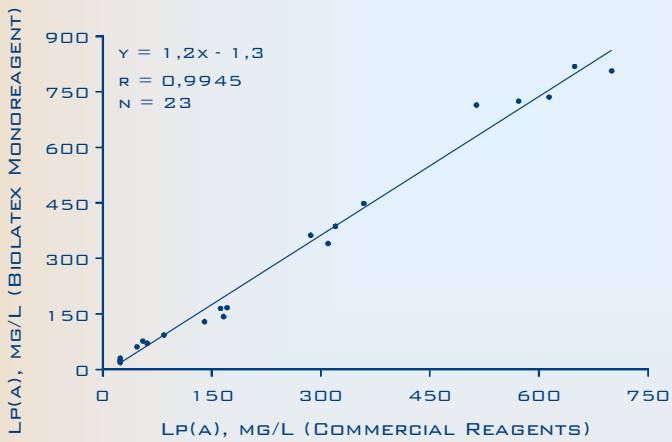
CALIBRATION CURVE



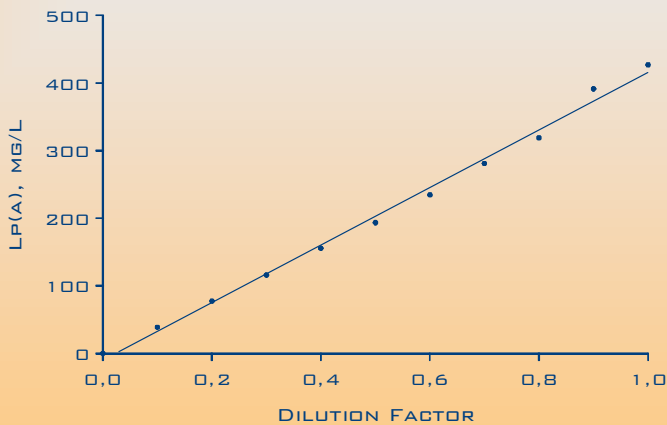
PROZONE



METHOD COMPARISON



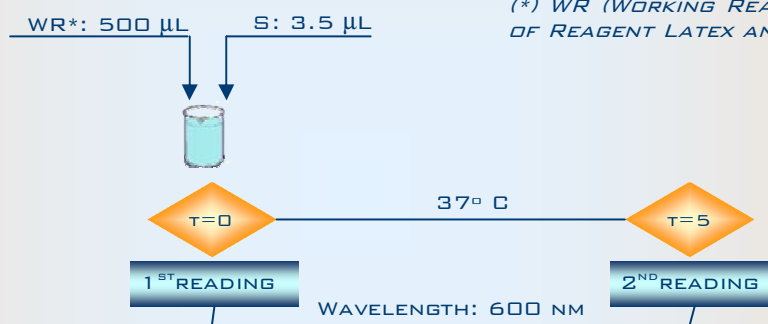
LINEARITY



MAIN FEATURES

- LATEX ENHANCED IMMUNOTURBIDIMETRIC MONOREAGENT METHOD
- EASY TO PROGRAM ON ANY TYPE OF AUTOMATED ANALYZERS
- GOOD CORRELATION WITH A NEPHELOMETRIC COMMERCIAL PROCEDURE
- RANGE OF ANALYSIS0.0 – 20 MG/L LINEAR UP TO 15 MG/L
- GOOD PRECISION.....INTRA-ASSAY: CVs < 3.2 %
.....INTER-ASSAY: CVs < 4.2 %
- LIQUID REAGENTS.....READY TO USE
- SELF-LIFE.....2 YEARS
- PROZONE> 100 MG/L
- LDD< 0.2 MG/L

GENERAL APPLICATION



(*) WR (WORKING REAGENT) IS PREPARED MIXING ONE PART OF REAGENT LATEX AND FIVE PARTS OF REAGENT BUFFER

PRECISION

	1	2	3
CONCENTRATION MG/L	1.75	8.0	15
CV %	3.2	1.3	1.9

INTRA-ASSAY PRECISION (N=10)

	1	2	3
CONCENTRATION MG/L	1.75	8.0	15
CV %	3.0	1.8	4.2

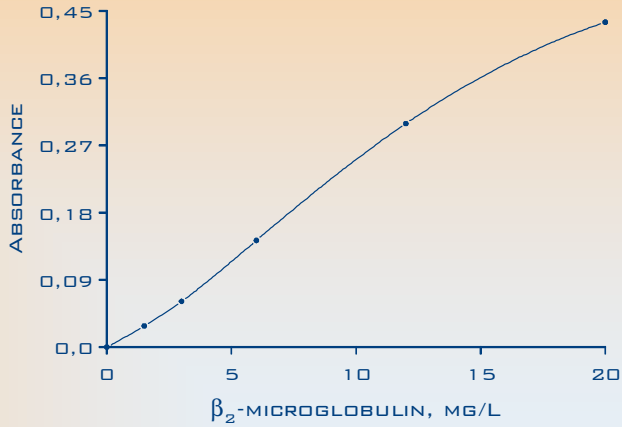
INTER-ASSAY PRECISION (N=10)

SENSITIVITY*

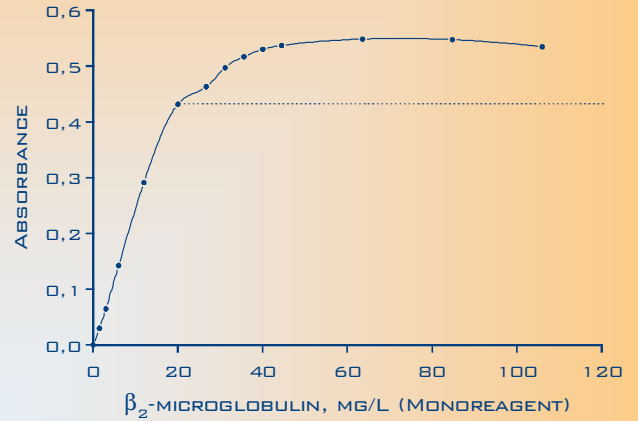
SENSITIVITY	
N	20
LDD MG/L	<0.2

(*) LEAST DETECTABLE DOSE (SENSITIVITY) DETERMINED AS THE β_2 -MICROGLOBULIN CONCENTRATION NEEDED FOR A THREE DEVIATION RESPONSE OVER THE 0.0 MG/L STANDARD ONE

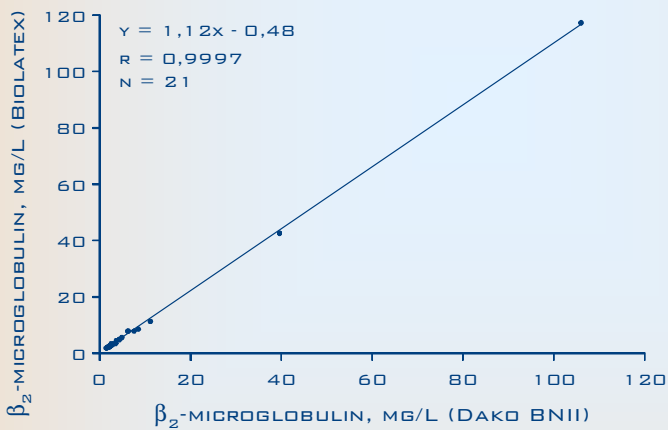
CALIBRATION CURVE



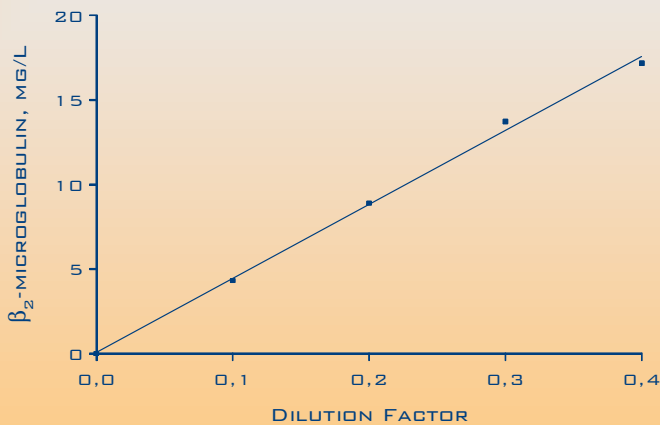
PROZONE



METHOD COMPARISON



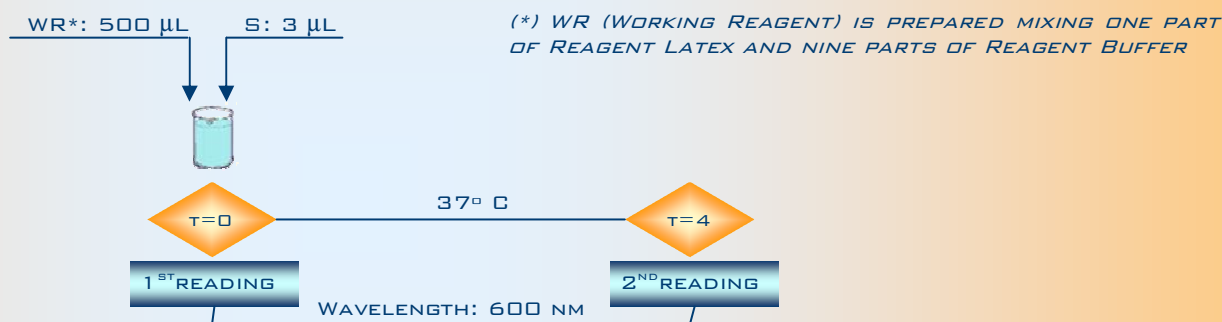
LINEARITY



MAIN FEATURES

- LATEX ENHANCED IMMUNOTURBIDIMETRIC MONOREAGENT METHOD
- EASY TO PROGRAM ON ANY TYPE OF AUTOMATED ANALYZERS
- GOOD CORRELATION WITH A COMMERCIAL PROCEDURE
- RANGE OF ANALYSIS0.0 – 250 MG/L LINEAR UP TO 125 MG/L
- GOOD PRECISION.....INTRA-ASSAY: CVs < 3.7 %
.....INTER-ASSAY: CVs < 4.5 %
- LIQUID REAGENTS.....READY TO USE
- SELF-LIFE.....2 YEARS
- PROZONE> 500 MG/L
- LDD< 5.0 MG/L

GENERAL APPLICATION



PRECISION

	1	2	3
CONCENTRATION MG/L	30	60	160
CV %	3.4	3.7	1.9

INTRA-ASSAY PRECISION (N=10)

	1	2	3
CONCENTRATION MG/L	30	60	160
CV %	4.5	2.4	4.5

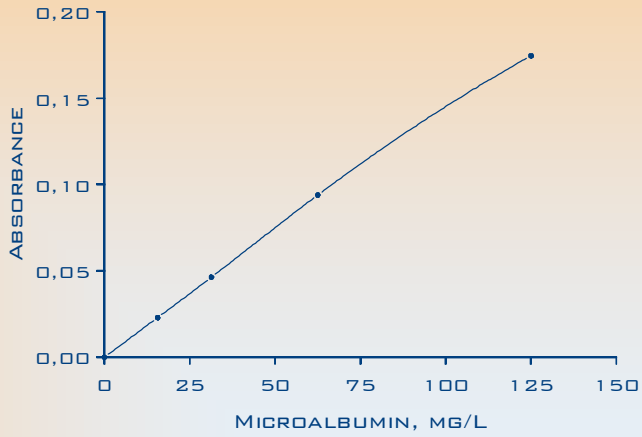
INTER-ASSAY PRECISION (N=10)

SENSITIVITY*

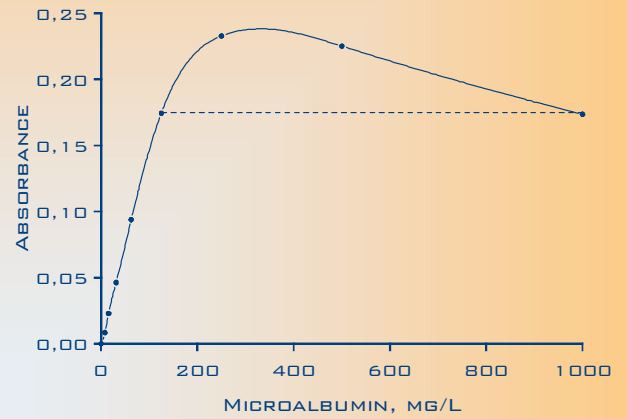
SENSITIVITY	
N	20
LDD MG/L	<5.0

(*) LEAST DETECTABLE DOSE (SENSITIVITY) DETERMINED AS THE MICROALBUMIN CONCENTRATION NEEDED FOR A THREE DEVIATION RESPONSE OVER THE 0.0 MG/L STANDARD ONE

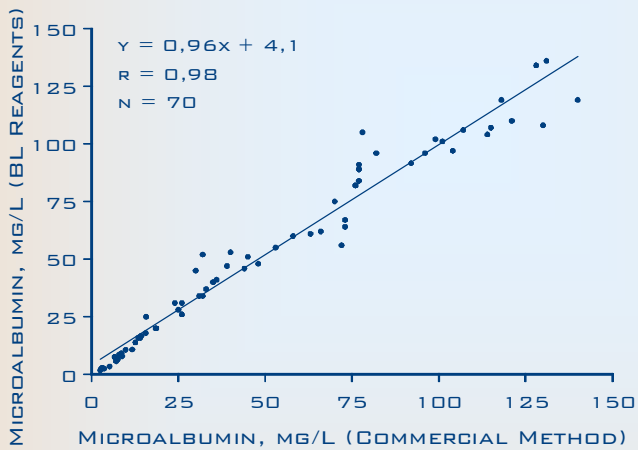
CALIBRATION CURVE



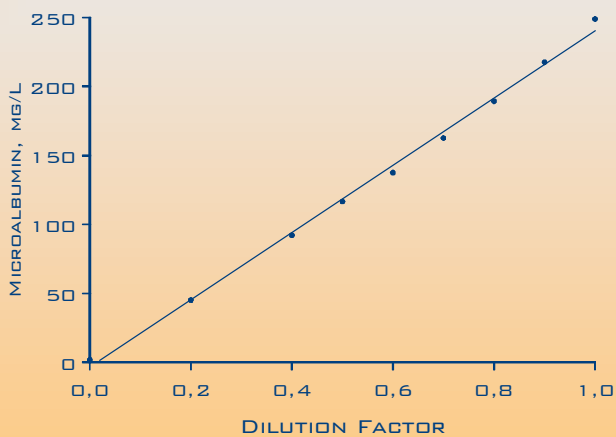
PROZONE



METHOD COMPARISON



LINEARITY



INFO@BIOLATEX.COM

CALAHORRA, 4 - PAB. 6 - 26006 LOGROÑO (SPAIN)
TEL: (34) 941 27 00 47 FAX: (34) 941 27 10 77